

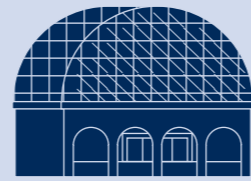
39% fabbriche



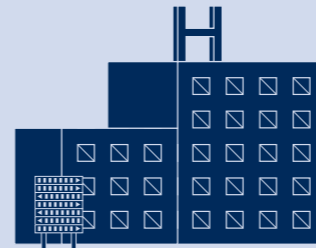
25% residenziale



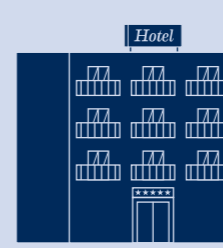
20% direzionale



7% commerciale



6% ospedaliero



3% alberghiero

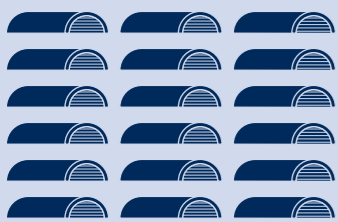
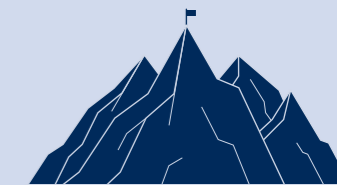
17.000.000 di mattoni in **100** anni



942.000 m di mattoni uno sopra l'altro

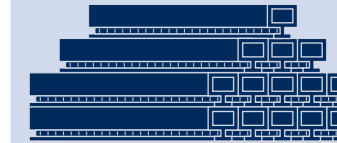
che corrisponde a

196 volte il Monte Bianco



3.900.000 di tegole acquistate in **100** anni

1908/2008
Tutti i numeri per un secolo di costruzioni Paterlini.

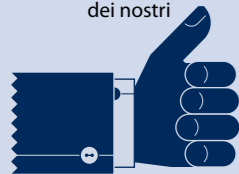


992.000 kg di ferro recuperato

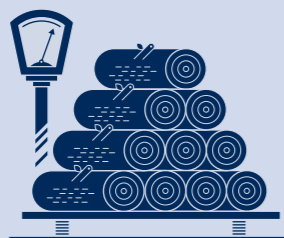


che corrisponde a **10** grosse locomotive a vapore

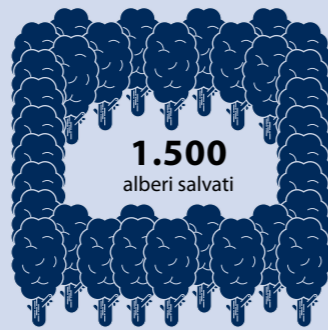
1.000.000 di sorrisi dei nostri



clienti felici



1.115.000 kg di legname recuperato



1.500 alberi salvati

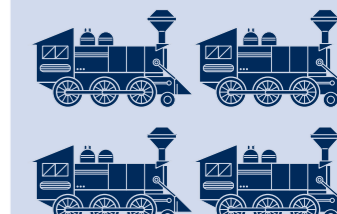
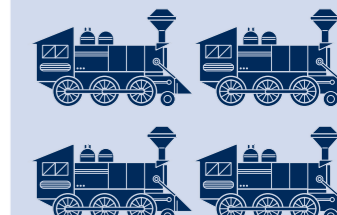
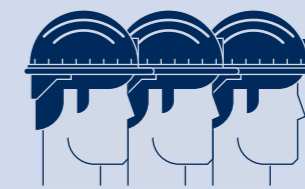


2.844.000 tonnellate di calcestruzzo

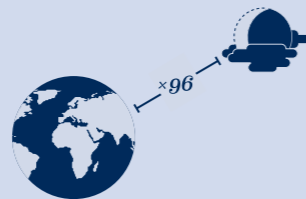


che corrisponde a **155.000** betoniere

ogni giorno in media **96** dipendenti



37.000.000 km percorsi dai mezzi negli ultimi **100** anni

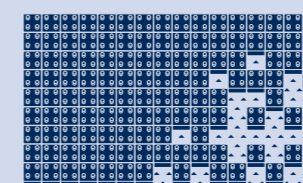


96 volte la distanza tra terra e luna

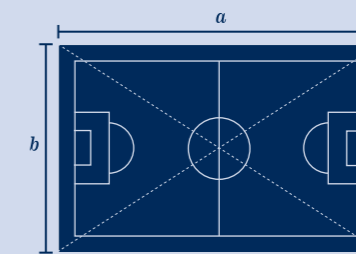


1.153.000 m di progetti stampati in **100** anni

17.000.000 di mattoni in **100** anni



514.000 m² di area coperta



73 volte l'area di un campo da calcio



100 anni di eventi.

